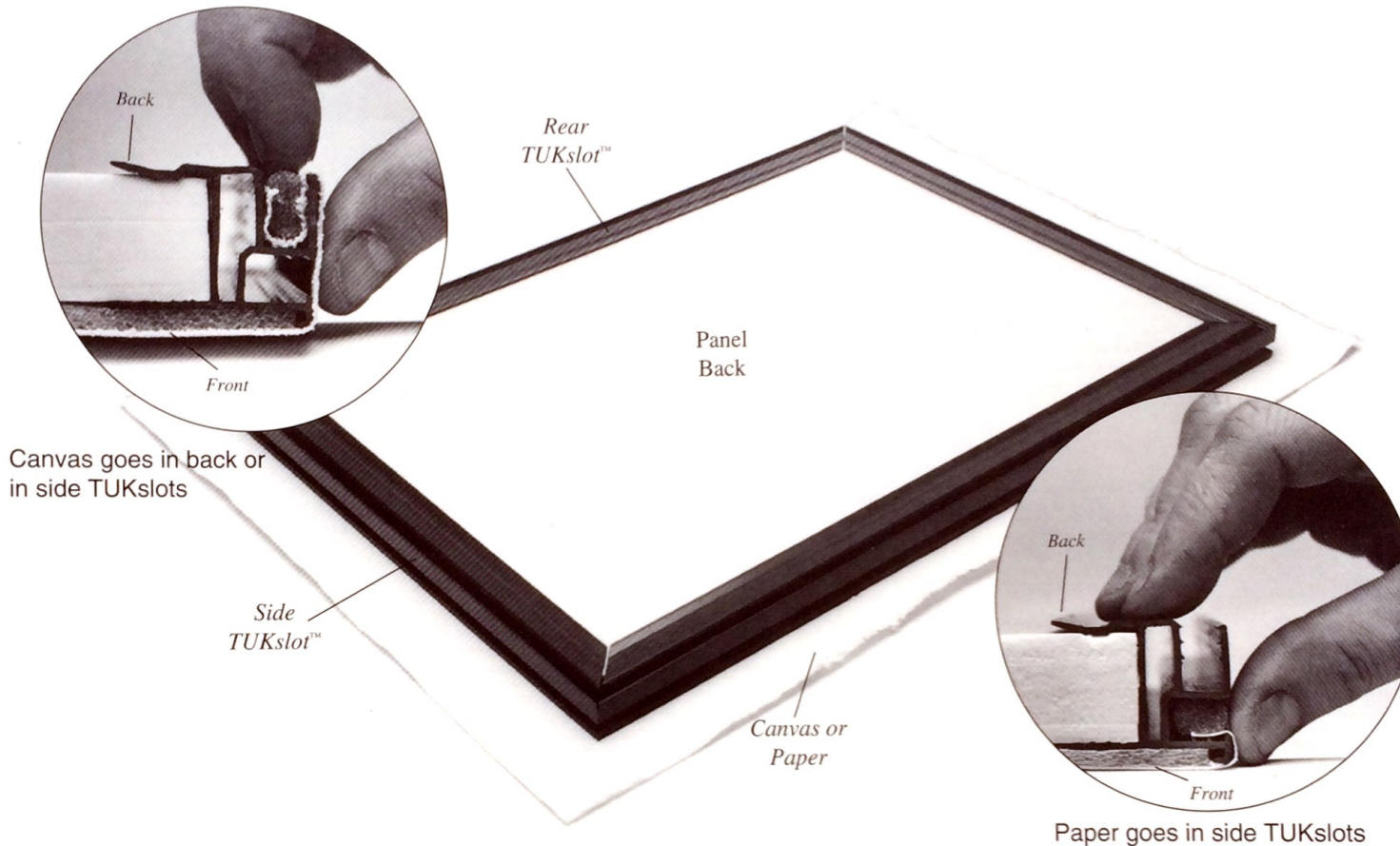


TUK PANEL™

A better way to stretch canvas and paper!



CONVENIENCE

- One Panel — Two Systems!
- No more canvas pliers, staples or messy tapes.
- Lightweight; portable, durable — handy for travel.
- Mount, remove and remount canvas or paper quickly.

“It’s a Godsend!”
Jules Olitski—Artist

“The most important innovation
for artists since acrylic paint.”
Kenneth Noland—Artist

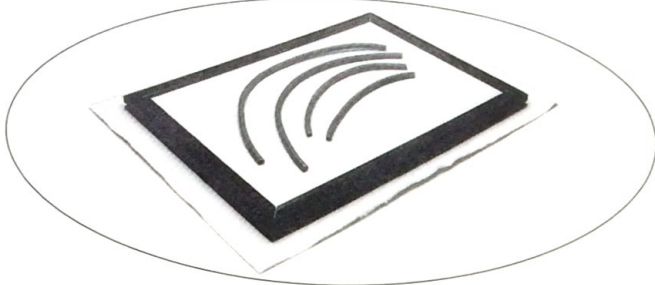
“Great to travel with!”
Shirley Erskine—
Artist/Teacher

Component stock also sold separately

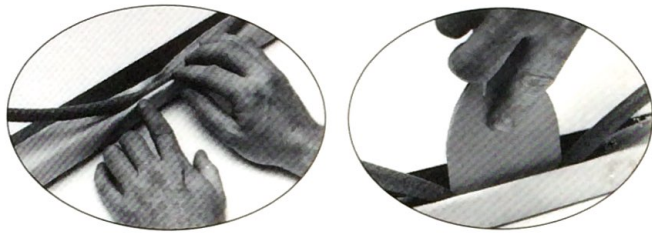
Made in Canada

FOR CANVAS

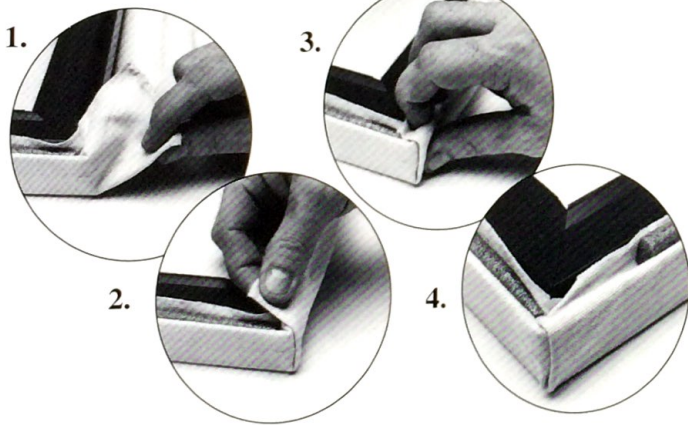
1. Place the TUK Panel™ face-down on the canvas. Allow enough excess to wrap around into either TUKslot™.



2. Push the canvas and the spline into the TUKslot with your fingers or with a stiff-bladed paint scraper.



3. Fold the corners then push them into the TUKslot alone—without the spline.



Note — The canvas should shrink to a proper final tension when gesso or paint is applied. Be sure to gesso the canvas before working with oils as oil paint solvents will damage the support board (as well as the canvas).

Tips:

- Use screw eyes to join the rear of the frame to the rear of the channel.
- Mount hinge hangers with sheet metal screws into the channel.

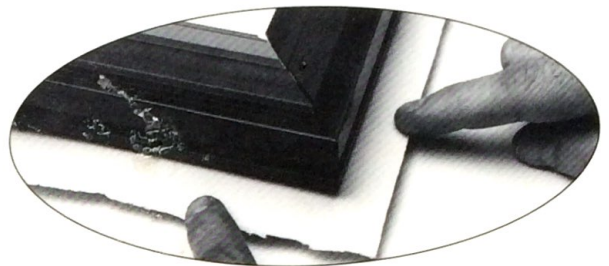


FOR WATERCOLOR PAPER

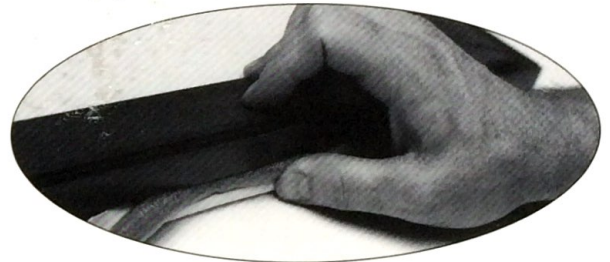
1. Soak watercolor paper before mounting. *



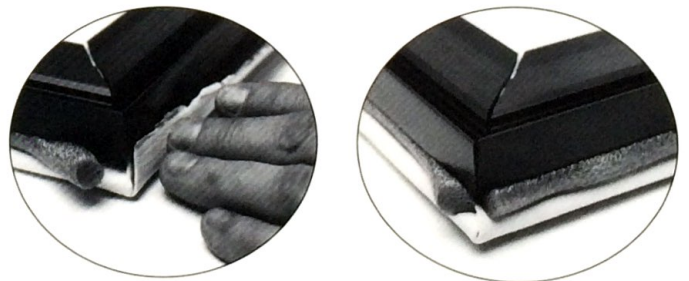
2. Place the TUK Panel face down on the paper leaving half an inch or so excess on each side.



3. Push the paper and spline into the TUKslot.



4. Fold the corners into the TUKslot.



5. Cut the finished painting around the edge of the panel with a mat knife then pull the spline and excess paper from the TUKslots.

* **TIP** — Some watercolor papers require lengthy soaking and others only light sponging. A good way to test it is to bend one corner down. If it springs back up it isn't wet enough. If it stays down it's ready to stretch. If it flops down on its own it's too wet.